

LAKE NORMAN REGION / NORTH CAROLINA

AVAILABLE INDUSTRIAL/OFFICE SITES



**SERIOUS BUSINESS.
SERIOUS FUN.**

THE PARK – HUNTERSVILLE

GILEAD CENTER

Reese Boulevard
Huntersville, NC 28078

DETAILS

<u>Size:</u>	1-12 acres Available sites
<u>Park Location:</u>	Mecklenburg County
<u>Park Name:</u>	The Park - Huntersville
<u>Inside City?:</u>	Yes (Huntersville)
<u>Utilities:</u>	
<u>Water:</u>	CMUD (12-inch line)
<u>Sewer:</u>	CMUD (8-inch line)
<u>Gas:</u>	Piedmont Natural Gas
<u>Power:</u>	EnergyUnited & Duke Energy
<u>Fiber Optics:</u>	Yes
<u>Telephone:</u>	AT&T

Transportation:

<u>I-77:</u>	Immediate
<u>I-85:</u>	9 miles
<u>I-40:</u>	27 miles
<u>I-485:</u>	3 miles
<u>I-95:</u>	132 miles
<u>Hwy. 73:</u>	2 miles
<u>Hwy. 321:</u>	32 miles
<u>Airport:</u>	15 miles (CLT/Douglas)
<u>Rail:</u>	N/A
<u>Port:</u>	

Wilmington & Charleston:
Approximately 200 miles

PRICING

Sale/Lease Prices:

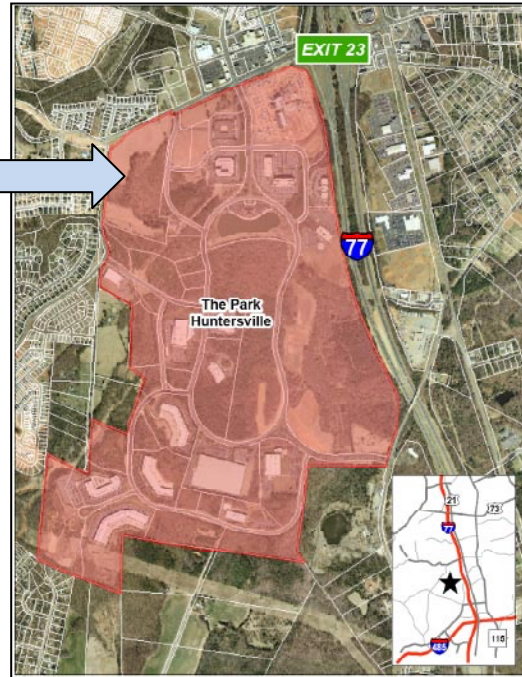
*Price dependent on location

CONTACT INFORMATION

Jill Ecuyer, Spectrum Properties
O: 704-875-0100
E: jecuyer@spectrum-properties.com

Jerry Broadway CEcD
Executive Director
Lake Norman Regional EDC
O: 704.992.2300
E: jbbroadway@lakenormanregion.com

Gilead Center
Property



ADDITIONAL INFORMATION

- Conveniently located between Charlotte and Lake Norman
- One exit north of the I-77 / I-485 interchange on Gilead Road- Exit 23
- 674 acre master planned mixed-use suburban commercial development with regional hospital
- Suitable for a wide array of uses, including corporate and regional HQ, office, medical office, R&D, light industrial, hotel, childcare, retail and multi-housing
- On site amenities:
 - ✓ Conference center, property management and maintenance
 - ✓ Childcare facility
 - ✓ Six-acre lake with walking path
 - ✓ Torrence Village retail center
 - ✓ Medical condominiums
 - ✓ Future full service hotel
- **Features of Gilead Center**
 - ✓ Sub-development of The Park – Huntersville
 - ✓ Sites ranging from 0.5 to 12.0 acres
 - ✓ Zoned Highway Commercial – Conditional District
 - ✓ Adjacent to future full service hotel
 - ✓ Suitable for small office, medical, restaurant or retail
 - ✓ Pre-graded lots with infrastructure in place
- For more information, please visit www.theparkhuntersville.com

LAKE NORMAN REGION
NORTH CAROLINA

LAKE NORMAN REGIONAL ECONOMIC DEVELOPMENT CORPORATION
13801 REESE BLVD. WEST, SUITE 200-A · HUNTERSVILLE, NC 28078
PHONE: 704-992-2300 · FAX: 704-992-2233

THE PARK - HUNTERSVILLE AVAILABLE SITES MAP



LAKE NORMAN REGION
NORTH CAROLINA

LAKE NORMAN REGIONAL ECONOMIC DEVELOPMENT CORPORATION
13801 REESE BLVD. WEST, SUITE 200-A · HUNTERSVILLE, NC 28078
PHONE: 704-992-2300 · FAX: 704-992-2233

THE PARK - HUNTERSVILLE MASTER PLAN



LAKE NORMAN REGION NORTH CAROLINA

LAKE NORMAN REGIONAL ECONOMIC DEVELOPMENT CORPORATION
13801 REESE BLVD. WEST, SUITE 200-A • HUNTERSVILLE, NC 28078
PHONE: 704-992-2300 • FAX: 704-992-2233