

LAKE NORMAN REGION / NORTH CAROLINA

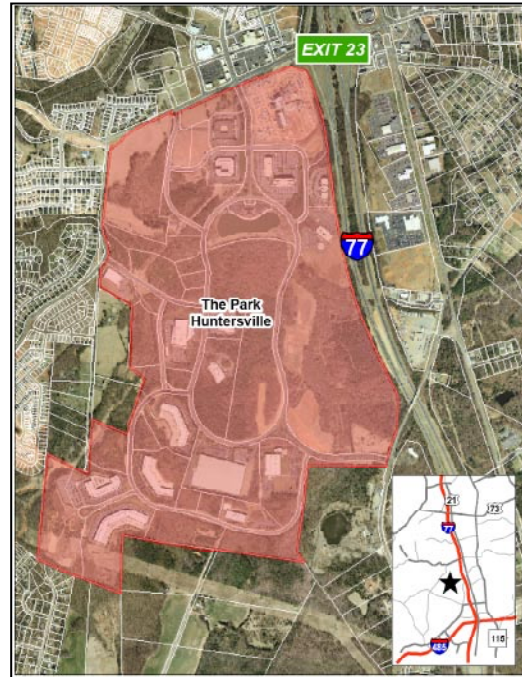
AVAILABLE INDUSTRIAL/OFFICE SITES



**SERIOUS BUSINESS.
SERIOUS FUN.**

THE PARK – HUNTERSVILLE

Reese Boulevard
Huntersville, NC 28078



ADDITIONAL INFORMATION

- Conveniently located between Charlotte and Lake Norman
- One exit north of the I-77 / I-485 interchange on Gilead Road- Exit 23
- 674 acre master planned mixed-use suburban commercial development with regional hospital
- Suitable for a wide array of uses, including corporate and regional HQ, office, medical office, R&D, light industrial, hotel, childcare, retail and multi-housing
- On site amenities:
 - ✓ Conference center, property management and maintenance
 - ✓ Childcare facility
 - ✓ Six-acre lake with walking path
 - ✓ Torrence Village retail center
 - ✓ Medical condominiums
 - ✓ Future full service hotel
- Park investors include:
 - ✓ Presbyterian Hospital Huntersville
 - ✓ Joe Gibbs Racing
 - ✓ Forbo Siegling
 - ✓ Levine & Dickson Hospice House
 - ✓ Keller Technology
 - ✓ Microban International
 - ✓ Rheon Corporation
- For more information, please visit www.theparkhuntersville.com

DETAILS

Size: 1-50 acres
Available sites

Park Location: Mecklenburg County

Park Name: The Park -Huntersville

Inside City?: Yes (Huntersville)

Utilities:

Water: CMUD (12-inch line)

Sewer: CMUD (8-inch line)

Gas: Piedmont Natural Gas

Power: EnergyUnited & Duke Energy

Fiber Optics: Yes

Telephone: AT&T

Transportation:

I-77: Immediate

I-85: 9 miles

I-40: 27 miles

I-485: 3 miles

I-95: 132 miles

Hwy. 73: 2 miles

Hwy. 321: 32 miles

Airport: 15 miles (CLT/Douglas)

Rail: N/A

Port:

Wilmington & Charleston:
Approximately 200 miles

PRICING

Sale/Lease Prices:

*Price dependent on location

CONTACT INFORMATION

Jill Ecuyer, Spectrum Properties
O: 704-875-0100
E: jecuyer@spectrum-properties.com

Jerry Broadway CEcD
Executive Director
Lake Norman Regional EDC
O: 704.992.2300
E: jbroadway@lakenormanregion.com

LAKE NORMAN REGION
NORTH CAROLINA

LAKE NORMAN REGIONAL ECONOMIC DEVELOPMENT CORPORATION
13801 REESE BLVD. WEST, SUITE 200-A · HUNTERSVILLE, NC 28078
PHONE: 704-992-2300 · FAX: 704-992-2233

THE PARK - HUNTERSVILLE AVAILABLE SITES MAP



LAKE NORMAN REGION
NORTH CAROLINA

LAKE NORMAN REGIONAL ECONOMIC DEVELOPMENT CORPORATION
13801 REESE BLVD. WEST, SUITE 200-A · HUNTERSVILLE, NC 28078
PHONE: 704-992-2300 · FAX: 704-992-2233

THE PARK - HUNTERSVILLE MASTER PLAN



LAKE NORMAN REGION NORTH CAROLINA

LAKE NORMAN REGIONAL ECONOMIC DEVELOPMENT CORPORATION
13801 REESE BLVD. WEST, SUITE 200-A • HUNTERSVILLE, NC 28078
PHONE: 704-992-2300 • FAX: 704-992-2233