

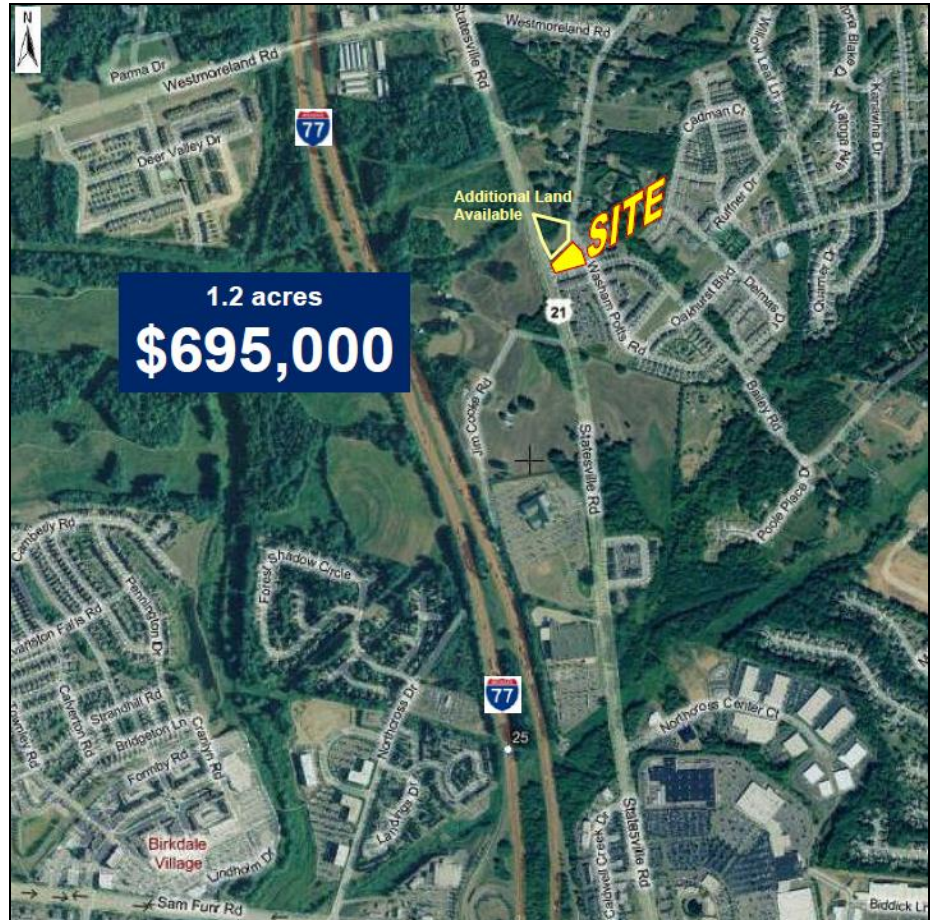


**SERIOUS BUSINESS.  
SERIOUS FUN.**

# LAKE NORMAN REGION / NORTH CAROLINA AVAILABLE SITES

## BAILEY RD. CORNER LOT

Bailey Rd. & Hwy. 21  
Cornelius, NC 28078



### DETAILS

**Size:** 1.2 acres  
**Zoning:** Traditional Neighborhood (TN)  
**Park Location:** Mecklenburg County  
**Inside City?:** Yes (Cornelius)  
**Topography:** Flat  
**Elevation:** 780'  
**Utilities:**  
**Water:** CMUD  
**Sewer:** CMUD  
**Gas:** Piedmont Natural Gas  
**Power:** EnergyUnited

### Transportation:

**I-77:** 1.6 miles  
**I-85:** 14.1 miles  
**I-40:** 28.4 miles  
**I-485:** 15 miles  
**Airport:** 37 miles (CLT/Douglas)  
**Rail:** N/A  
**Port:**  
 Wilmington: 216 miles  
 Charleston: 227 miles

**GIS ID #:** 00503402

### PRICING

**Sale Price:** \$695,000

### CONTACT INFORMATION

Jerry Broadway CEcD  
 Executive Director  
 Lake Norman Regional EDC  
 O: 704.992.2300  
 E: jbbroadway@lakenormanregion.com

### ADDITIONAL INFORMATION

This corner lot (vacant land) across from 131 Main (popular restaurant), is part of the "Oakhurst" development. The property provides 35' of frontage on Hwy. 21 and 320' footage on Bailey Road. It is zoned Traditional Neighborhood and allows for various commercial uses.

**LAKE NORMAN REGION**  
 NORTH CAROLINA

**LAKE NORMAN REGIONAL ECONOMIC DEVELOPMENT CORPORATION**  
 13801 REESE BLVD. WEST, SUITE 200-A · HUNTERSVILLE, NC 28078  
 PHONE: 704-992-2300 · FAX: 704-992-2233